

---

---

## H27

---

---

1.

1.1.

28 4

1.3.

27 2

27 3

1

1.4.

3756

1186

32%

1.5.

1.6.

<b>1</b>	
	568
	385
	103
	76
	5
	1563
	454
	612
	3766

2.

5%

(%)

3

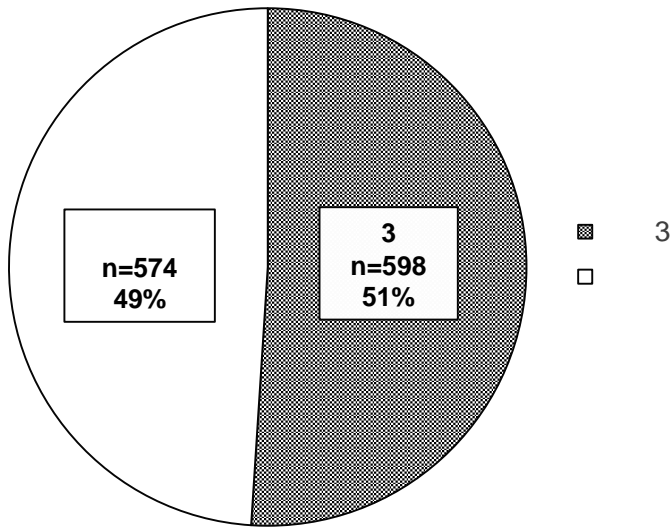
±

3

t

1.

	1186								
		574	49	3					
				598	51				14
1									
								112	
38			59	39			25		13
					2				
3					428	73%			
96	16%			21	3%		3		

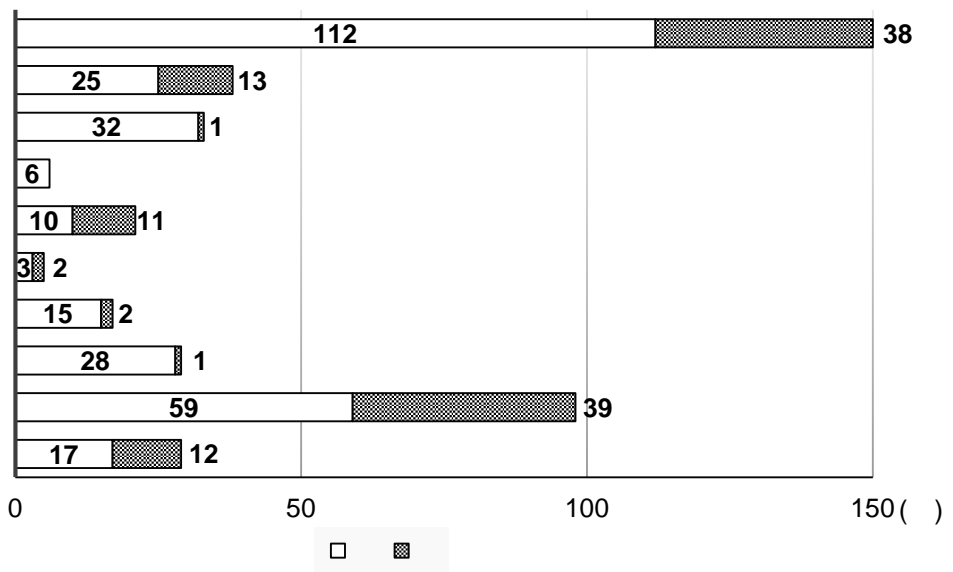


1

3

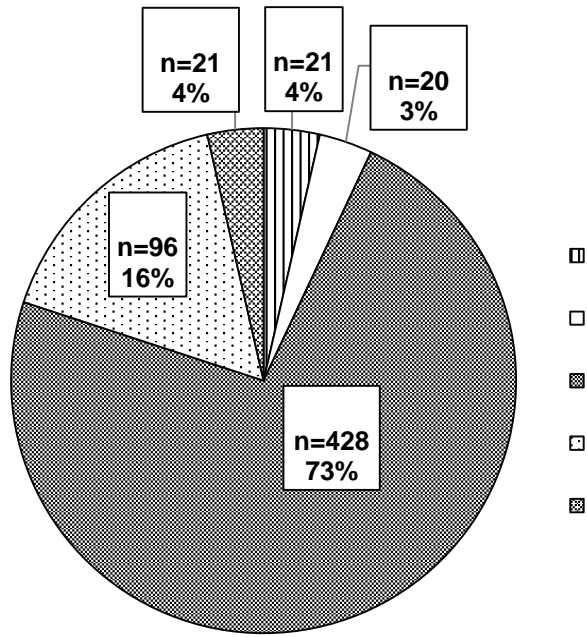
3

14



2

148



3

3

3

12

2.

2

234 41.7% 3 514 87.3%  
 44.9±13.4 3 32.8±9.6  
 3

3

2

		n=574)		3		n=598)	
		n		n			
†		234	(41.7)	514		(87.3)	
(	†	44.9 ±	13.4	32.8 ±	9.6		
†		190	(33.9)	376		(63.5)	
†		298	(55.0)	190		(34.1)	
*		71	(6.2)	37		(6.3)	
	( )						
	†	1.76 ±	1.76	2.45 ±	2.17		
	†	3.63 ±	3.36	4.60 ±	4.49		
1)		68	(12.1)	55		(9.3)	
2		333	(59.4)	343		(58.1)	
3)		104	(18.6)	115		(19.5)	
	±		(%)				1) 3)

43

19

73

25

31

36

34

1) 20 2) 21 3) 21  
 (\*:P<0.001 †:P<0.0001)

3.

3

9.5 ± 2.0

3

9.0 ± 1.5

Job Content Questionnaire JCQ

3

3

the Copenhagen Burnout Inventory

Personal Burnout

Work-related Burnout

Client-

related Burnout

3

DSM-V

3

3

		n=574)		3	n=598)	
	†	9.5 ± 2.0		9.0 ± 1.5		
		5.9 ± 1.1		5.8 ± 1.4		
	†	88 (15.3)		196 (32.8)		
	†	33.8 ± 5.7		35.7 ± 5.0		
	†	71.1 ± 9.7		64.0 ± 9.0		
		23.3 ± 4.1		23.0 ± 4.0		
	†	15.0 ± 5.2		17.8 ± 5.4		
	†	15.7 ± 5.1		18.8 ± 5.6		
	†	13.5 ± 4.2		14.7 ± 4.8		
*		98 (17.1)		134 (22.4)		
±		(%)				
:96	the Copenhagen Burnout Inventory	: 32	: 100	DSM-V	:48	
41	24	28	27	24	26	
28	50					
						(*:P<0.05 †:P<0.0001)