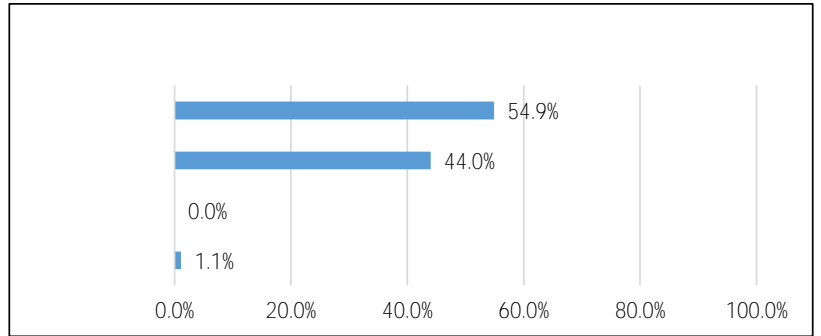


					1,084
--	--	--	--	--	-------

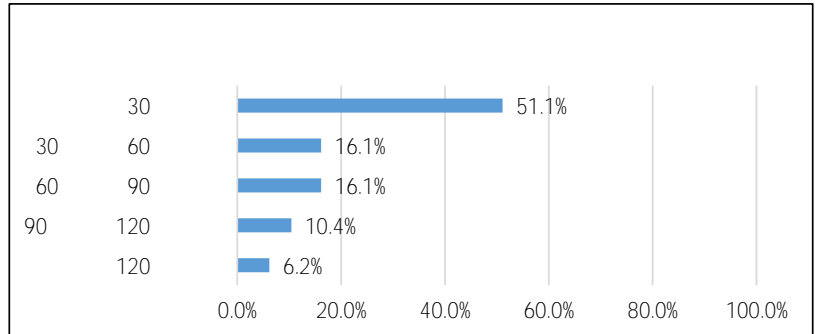
1

1		595	54.9%
2		477	44.0%
3		0	0.0%
4		12	1.1%
		1,084	100.0%



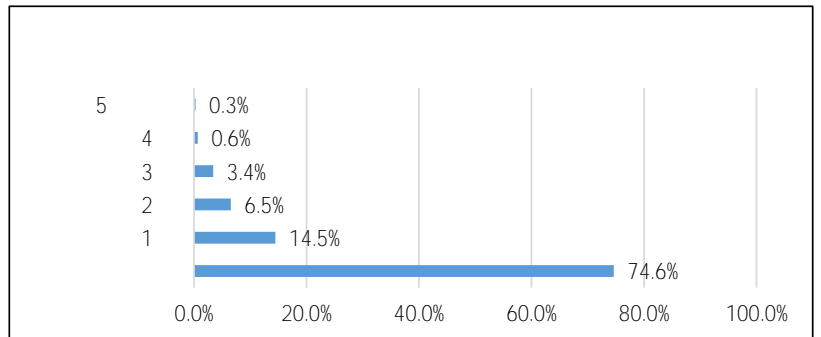
2

1	30	554	51.1%
2	30 60	175	16.1%
3	60 90	175	16.1%
4	90 120	113	10.4%
5	120	67	6.2%
		1,084	100.0%



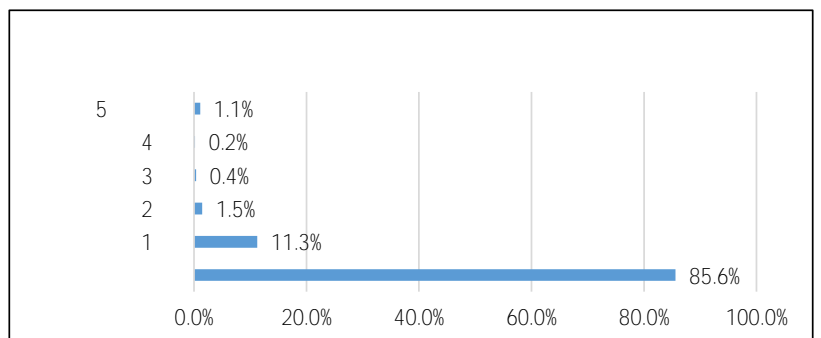
3

1	5	3	0.3%
2	4	7	0.6%
3	3	37	3.4%
4	2	71	6.5%
5	1	157	14.5%
6		809	74.6%
		1,084	100.0%



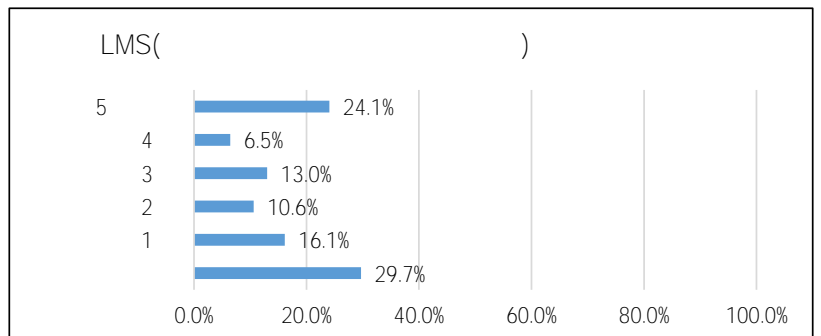
4

1	5	12	1.1%
2	4	2	0.2%
3	3	4	0.4%
4	2	16	1.5%
5	1	122	11.3%
6		928	85.6%
		1,084	100.0%



5 LMS

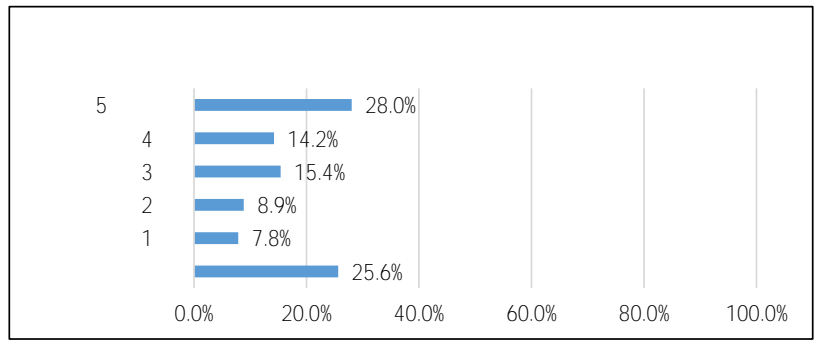
1	5	261	24.1%
2	4	70	6.5%
3	3	141	13.0%
4	2	115	10.6%
5	1	175	16.1%
6		322	29.7%
		1,084	100.0%



					1,084
--	--	--	--	--	-------

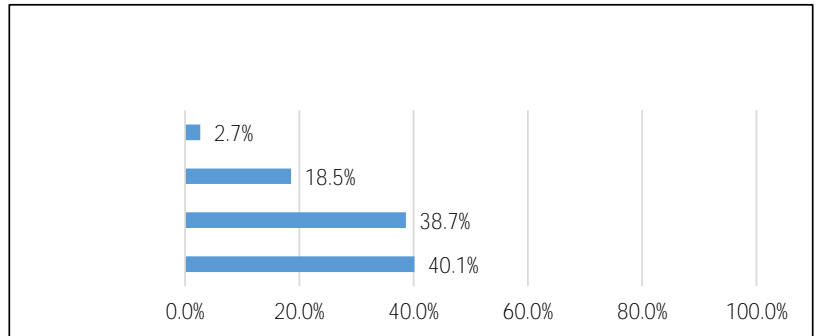
6

1	5	304	28.0%
2	4	154	14.2%
3	3	167	15.4%
4	2	96	8.9%
5	1	85	7.8%
6		278	25.6%
		1,084	100.0%



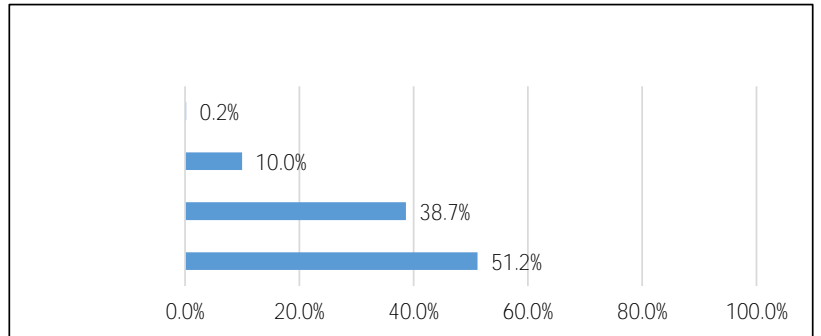
7

1		29	2.7%
2		201	18.5%
3		419	38.7%
4		435	40.1%
		1084.0	100.0%



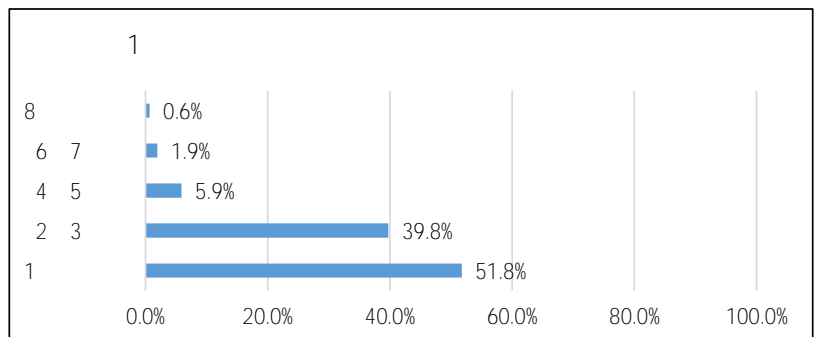
8

1		2	0.2%
2		108	10.0%
3		419	38.7%
4		555	51.2%
		1,084	100.0%



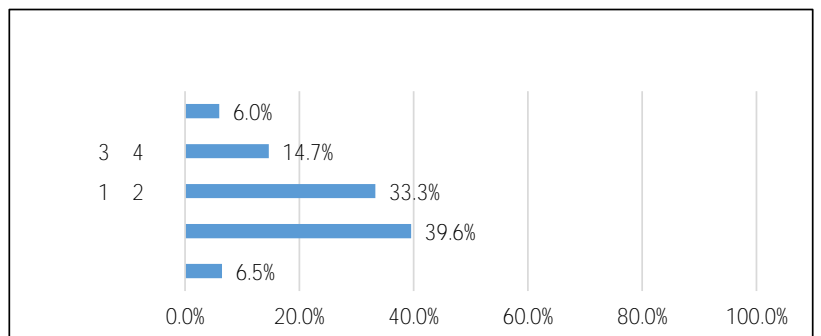
9 1

1	8	7	0.6%
2	6 7	21	1.9%
3	4 5	64	5.9%
4	2 3	431	39.8%
5	1	561	51.8%
		1,084	100.0%



10

1		65	6.0%
2	3 4	159	14.7%
3	1 2	361	33.3%
4		429	39.6%
5		70	6.5%
		1,084	100.0%

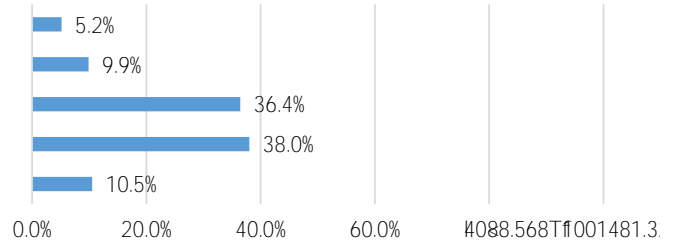


2022

					1,084
--	--	--	--	--	-------

11

1		56	5.2%
2	3 4	107	9.9%
3	1 2	395	36.4%
4		412	38.0%
5		114	10.5%
		1,084	100.0%



12

1		130	12.0%
2	3 4	79	7.3%
3	1 2	278	25.6%
4		447	41.2%
5		150	13.8%
		1,084	100.0%

13

1		93	8.6%
2		12	1.1%
3	4	116	10.7%
4		120	11.1%
5		688	63.5%
6		55	5.1%
		1,084	100.0%

14

1		183	16.9%
2		724	66.8%
3		167	15.4%
4		8	0.7%
5		2	0.2%
		1084.0	100.0%

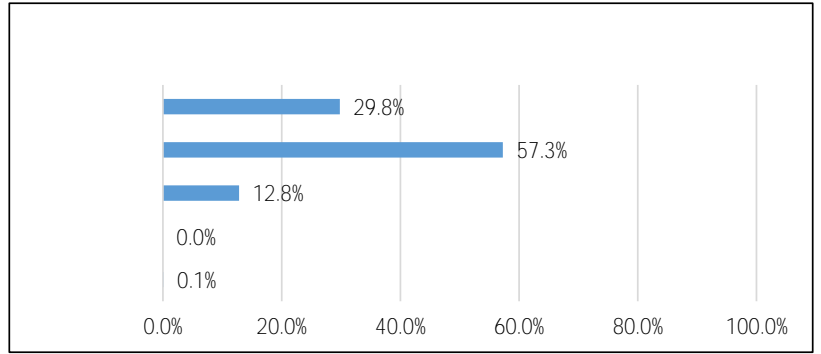
15

1		398	36.7%
2		630	58.1%
3		52	4.8%
4		3	0.3%
5		1	0.1%
		1,084	100.0%

					1,084
--	--	--	--	--	-------

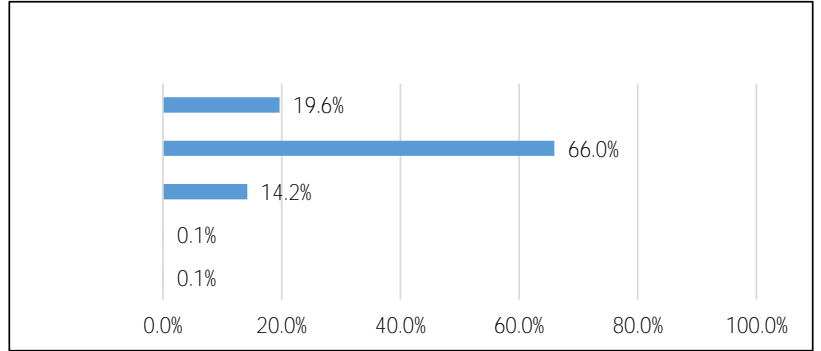
16

1		323	29.8%
2		621	57.3%
3		139	12.8%
4		0	0.0%
5		1	0.1%
		1,084	100.0%



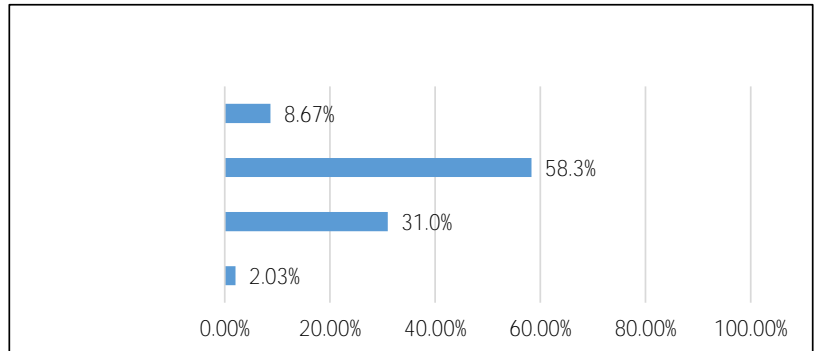
17

1		213	19.6%
2		715	66.0%
3		154	14.2%
4		1	0.1%
5		1	0.1%
		1,084	100.0%



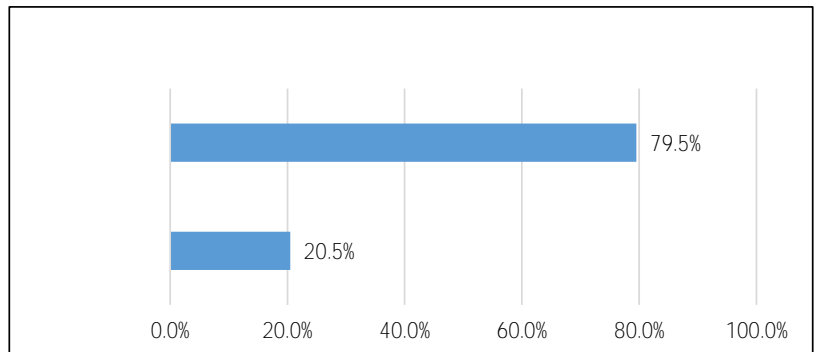
18

1		94	8.67%
2		632	58.3%
3		336	31.0%
4		22	2.03%
		1084.0	100.00%



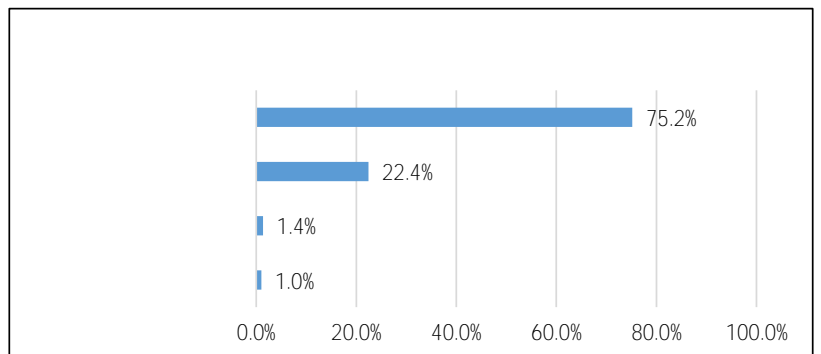
19

1		862	79.5%
2		222	20.5%
		1,084	100.0%



20

1		815	75.2%
2		243	22.4%
3		15	1.4%
4		11	1.0%
		1,084	100.0%

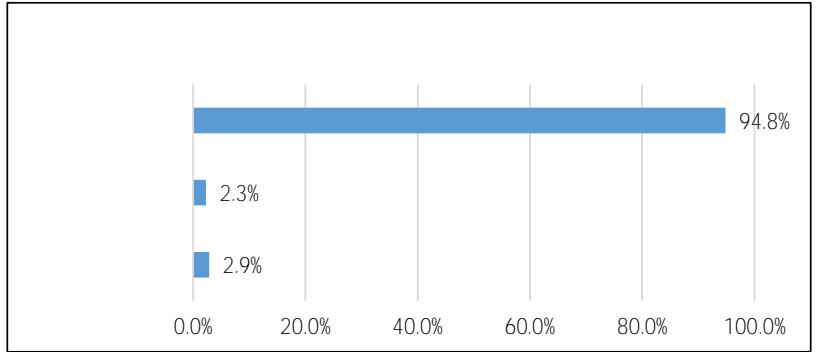


2022

					1,084
--	--	--	--	--	-------

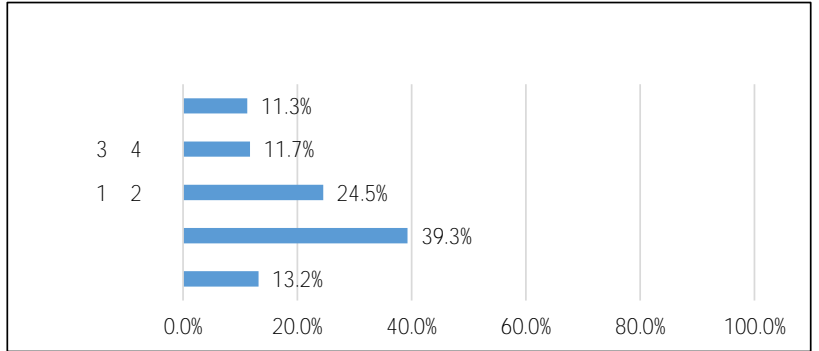
21

1		1,028	94.8%
2		25	2.3%
3		31	2.9%
		1,084	100.0%



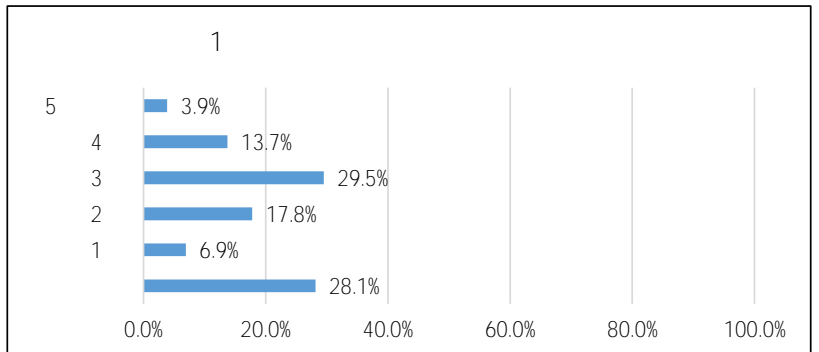
22

1		122	11.3%
2	3 4	127	11.7%
3	1 2	266	24.5%
4		426	39.3%
5		143	13.2%
		1,084	100.0%



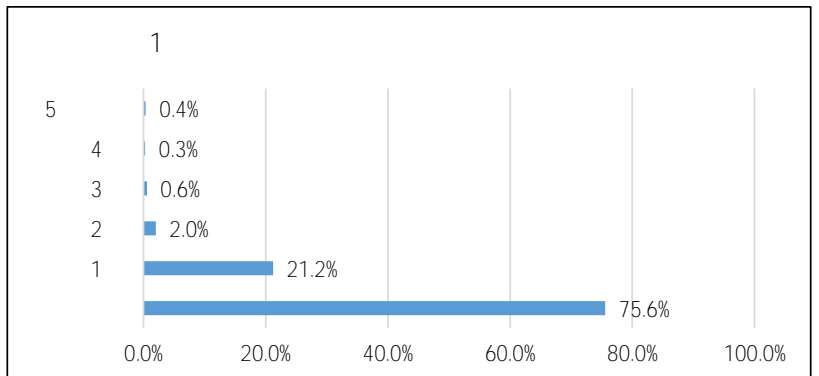
23 1

1	5	42	3.9%
2	4	149	13.7%
3	3	320	29.5%
4	2	193	17.8%
5	1	75	6.9%
6		305	28.1%
		1,084	100.0%



24 1

1	5	4	0.4%
2	4	3	0.3%
3	3	6	0.6%
4	2	22	2.0%
5	1	230	21.2%
6		819	75.6%
		1,084	100.0%



25 SNS Twitter Facebook

1	Twitter	581	53.6%
2	Facebook	23	2.1%
3	Instagram	933	86.1%
4	LINE	1033	95.3%
5		89	8.2%
6		16	1.5%
		2,675	

